

# riskHive Enterprise Risk Manager

## Secure cloud based RAIDO database system specification and features

Designed to provide a simple and cost-effective way of centralising risk management and reporting, riskHive quickly and effectively imports, consolidates and maintains your existing risk registers in a portfolio database allowing you to start generating information and reports straight away by importing current excel risk registers.

---

### System specification

- Industrial-strength professional database application
  - 2048-bit data encryption and SSL application security
  - Single sign-on (SSO) SAML2 multi-level IP capability
  - Super-secure cloud hosting or local intranet / network
  - Browser-based application delivery on any platform
  - No client-side downloads, plug-ins or add-ins required
  - High resilience, low data bandwidth, auto-archiving
  - Triple-system deployment: Live, Staging and Training
  - Supports 25 - 25,000 system users (<250 concurrent)
  - Super-fast deployment: up and running in <24 hours
  - Start small and scale-up only when you need to
  - Simple complete system backup, transfer and restore
  - Sub-Google interface speed - fast click-responses
- 

### System features

- Manage risks, opportunities, assumptions and actions
  - Super-configurable user interface and reporting
  - Alignment with ISO, AU/NZ and COSO standards
  - Project > Programme > Portfolio aggregation system
  - Multiple hierarchical data organisation structures
  - Simultaneous multiple languages and currencies
  - Qualitative and quantitative assessment and reporting
  - NEC3 Trend (emerging risk) management process
  - Fast and easy import / export of data and information
  - Advanced interactive data graphics; bow-ties, word-clouds, map-views, radials, heatmaps and risk-radars
  - Built-in Monte Carlo Simulation and Analysis tools
  - Cost and Schedule Risk Analysis including combined cost & schedule
-

## riskHive ERM application features

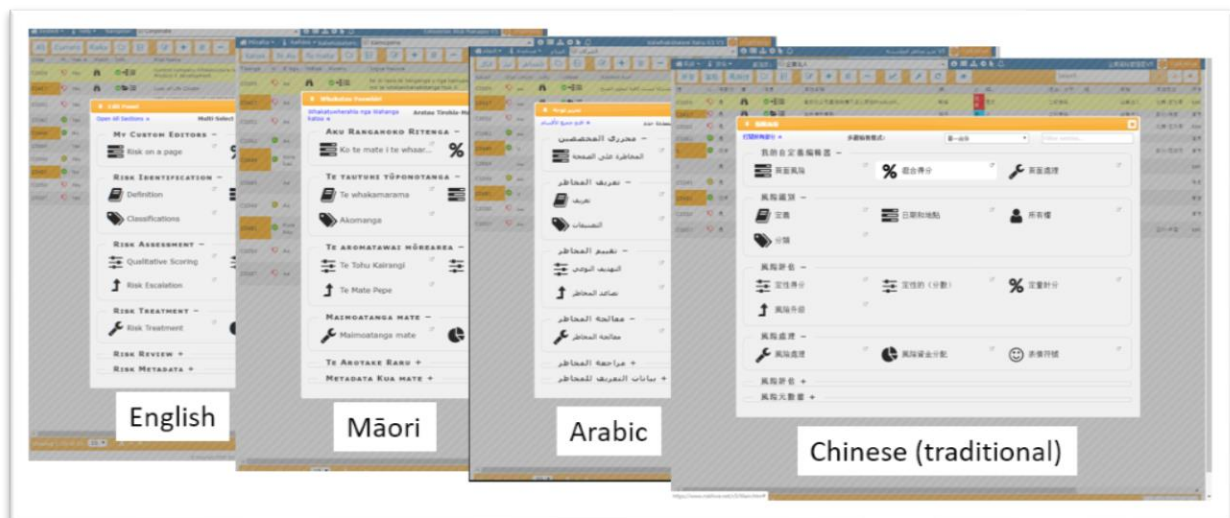
### Global Navigator Map View

Displays projects overlaid onto their continental locations.  
Click-through on continent to see projects by category and then select project to view in main system grid.



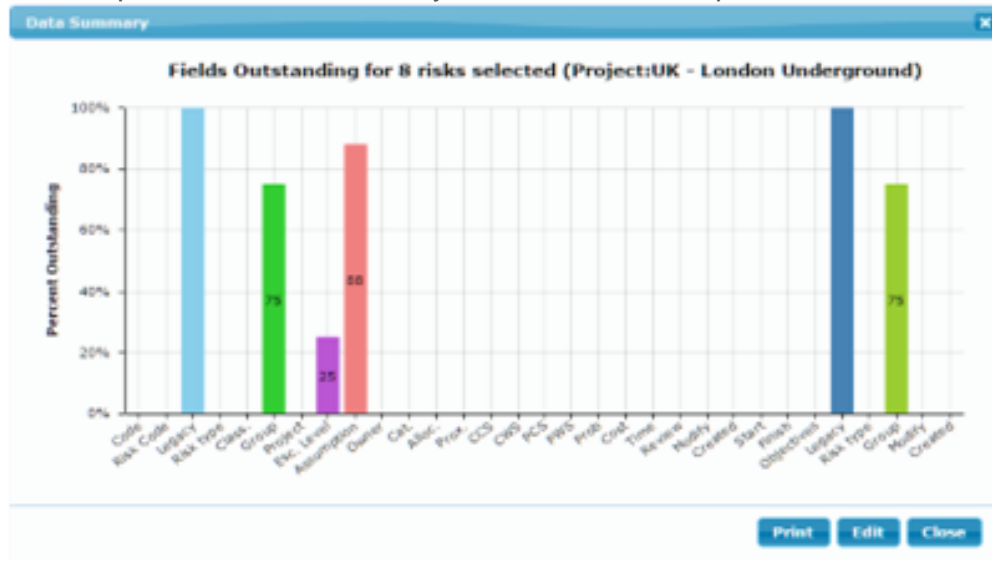
### Interface in over 70 National Languages & currencies

Designed to work with Google Translate extension, the application can be viewed in any one of 71 different languages (and counting). Trans-national users can view the same screen at the same time in their own national language and local currency.  
Both the application controls and text-entry information are translated in real-time.



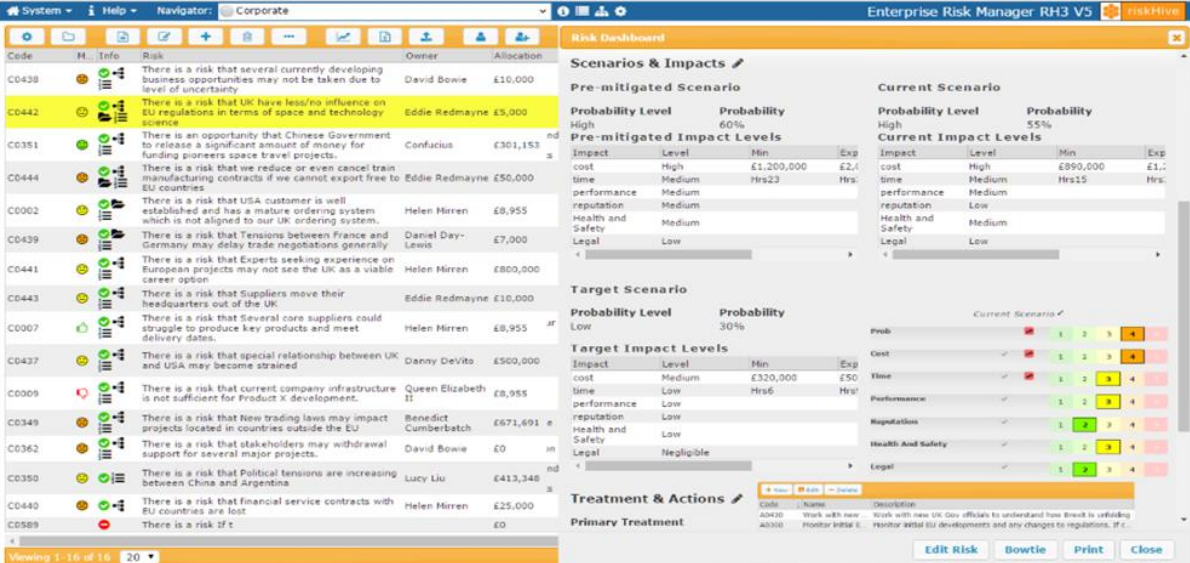
## Data Field Completeness Charts

These reports generate histograms displaying mandated field titles and their degree of completeness or, conversely the extent of incompleteness of data.



## Review Session Mode - made to make risk reviews

riskHive V5 supports workflow for interactive risk reviews. Using a split-screen approach, a list of risks - whether contained in a single project or a subset or superset from the whole portfolio - can be systematically reviewed, amended (with logs) and checked-off one-by-one. A configurable data panel displays editable detail. The session work order can be captured and a review session manager stores metadata like session participants and minutes.



**System** | **Help** | **Navigator: Corporate** | **Enterprise Risk Manager RH3 V5** | **riskHive**

**Risk Dashboard**

**Scenarios & Impacts**

**Pre-mitigated Scenario**

Probability Level: High | Probability: 60%

**Pre-mitigated Impact Levels**

Impact	Level	Min	Exp
cost	High	£1,200,000	£2.1
time	Medium	Hrs23	Hrs
performance	Medium		
reputation	Medium		
Health and Safety	Medium		
Legal	Low		

**Current Scenario**

Probability Level: High | Probability: 55%

**Current Impact Levels**

Impact	Level	Min	Exp
cost	High	£990,000	£1.1
time	Medium	Hrs15	Hrs
performance	Medium		
reputation	Low		
Health and Safety	Medium		
Legal	Low		

**Target Scenario**

Probability Level: Low | Probability: 30%

**Target Impact Levels**

Impact	Level	Min	Exp
cost	Medium	£320,000	£50
time	Low	Hrs6	Hrs
performance	Low		
reputation	Low		
Health and Safety	Low		
Legal	Negligible		

**Treatment & Actions**

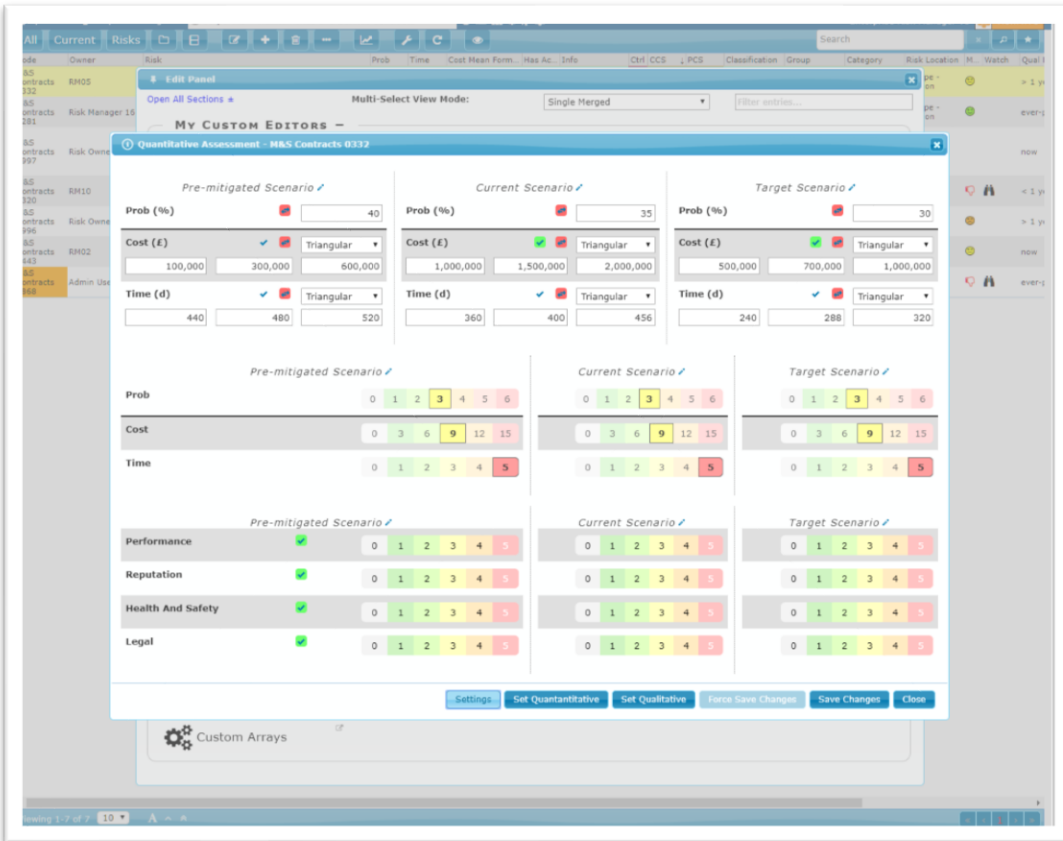
**Primary Treatment**

Code	Name	Description
A0430	Work with new	Work with new UK Gov officials to understand how Brexit is unfolding
A0330	Monitor initial E	Monitor initial EU developments and any changes to regulations, if c.

**Viewing 1 of 16** | **20** | **Edit Risk** | **Bowtie** | **Print** | **Close**

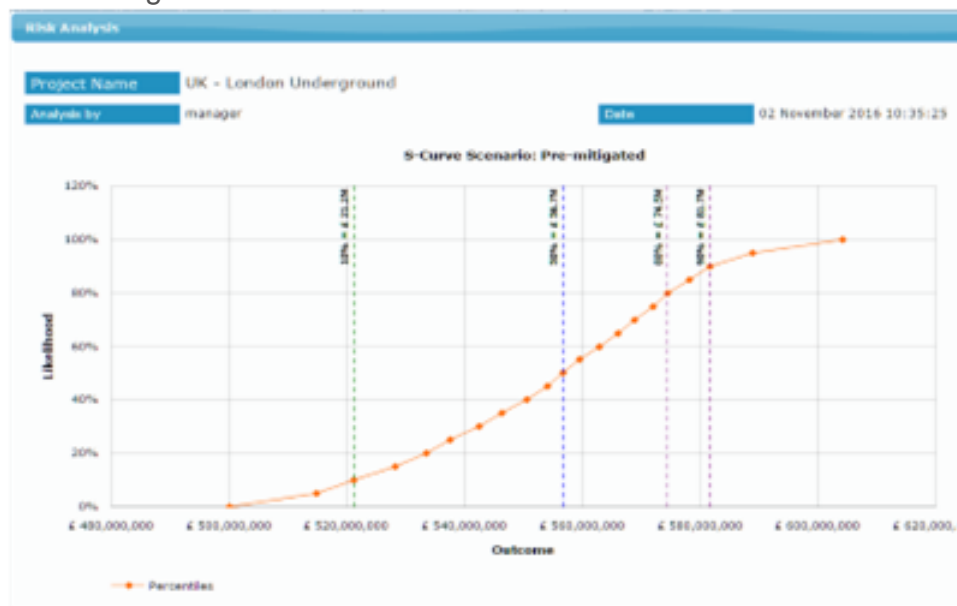
## Custom Hybrid scoring mode

Facilitates a combination of quantitative and qualitative scoring on one screen.



## Monte Carlo Simulation (for Cost and Schedule and both)

The system features the same industry-standard monte carlo simulator as the Arrisca Desktop Analyser. Online risk analysis of costs based on filtered and sorted data is as simple as clicking a mouse. Simulations and results are archived for future retrieval.





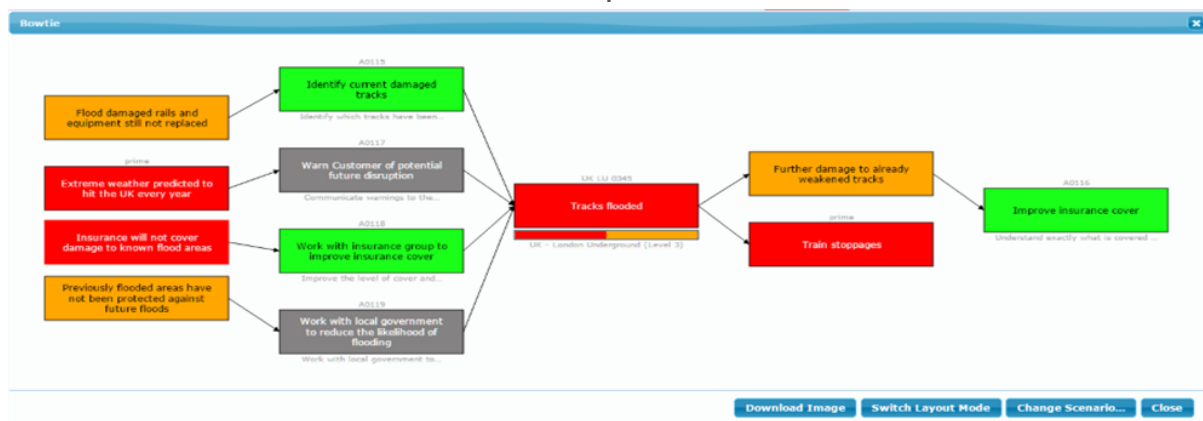
## Word Clouds

Word clouds expose common themes and subjects by displaying the most frequently occurring words in the database. These can be filtered individually and composed of tile, cause, effect or all description fields.



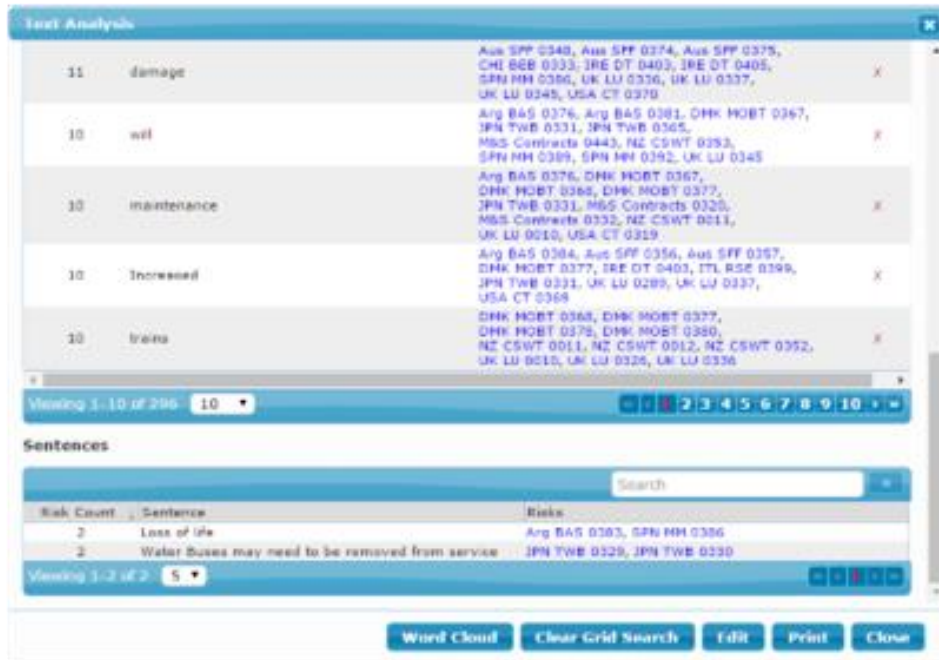
## Bow-Tie Graphical Interface

The interactive graphics of our Bow-Tie visualiser allow the user to more effectively define the threat-space by describing not just risk line items but multiple causes and effects, active controls and fallback actions. The risk information in the database can be edited and added to using the graphical interface with all changes being committed back to the system for management. Bow-Ties can also be generated from multiple risks or word-searches.



## Duplicate / Common Risk Finder

The system features an automated search facility to identify common words or even sentences within the database. All description fields may be interrogated and then applied as a filter to view in the main grid.



**Text Analysis**

Risk Count	Word	Risks
11	damage	Aus SFF 0340, Aus SFF 0374, Aus SFF 0375, CHI 628 0333, IRE DT 0403, IRE DT 0405, SFF NH 0360, UK LU 0336, UK LU 0337, UK LU 0345, USA CT 0370
10	will	Arg BAS 0376, Arg BAS 0381, DMK MOBT 0367, JPN TWB 0331, JPN TWB 0365, MBS Contracts 0443, NZ CSWT 0353, SFF NH 0369, SFF NH 0392, UK LU 0345
10	maintenance	Arg BAS 0376, DMK MOBT 0367, DMK MOBT 0368, DMK MOBT 0377, JPN TWB 0331, MBS Contracts 0326, MBS Contracts 0332, NZ CSWT 0311, UK LU 0310, USA CT 0319
10	Increased	Arg BAS 0384, Aus SFF 0356, Aus SFF 0357, DMK MOBT 0377, IRE DT 0403, IRL RSE 0399, JPN TWB 0331, UK LU 0289, UK LU 0337, USA CT 0368
10	trains	DMK MOBT 0368, DMK MOBT 0377, DMK MOBT 0378, DMK MOBT 0380, NZ CSWT 0011, NZ CSWT 0012, NZ CSWT 0352, UK LU 0310, UK LU 0326, UK LU 0336

Viewing 1-10 of 296 10

**Sentences**

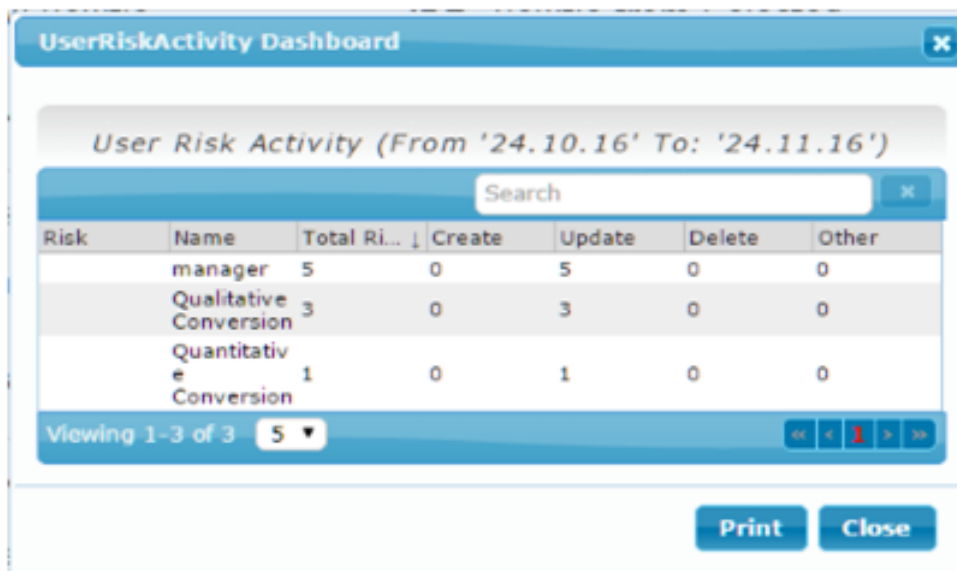
Risk Count	Sentence	Risks
2	Loss of life	Arg BAS 0383, SFF NH 0386
2	Water Buses may need to be removed from service	JPN TWB 0329, JPN TWB 0330

Viewing 1-2 of 2 5

Word Cloud Clear Grid Search Edit Print Close

## User Activity Recorder

The system keeps track of users logging-in and logging-out and also records what they have done so activity can be viewed over time. This makes it simple to identify users with the most and least data update activity.



**UserRiskActivity Dashboard**

User Risk Activity (From '24.10.16' To: '24.11.16')

Risk	Name	Total Ri...	Create	Update	Delete	Other
	manager	5	0	5	0	0
	Qualitative Conversion	3	0	3	0	0
	Quantitative Conversion	1	0	1	0	0

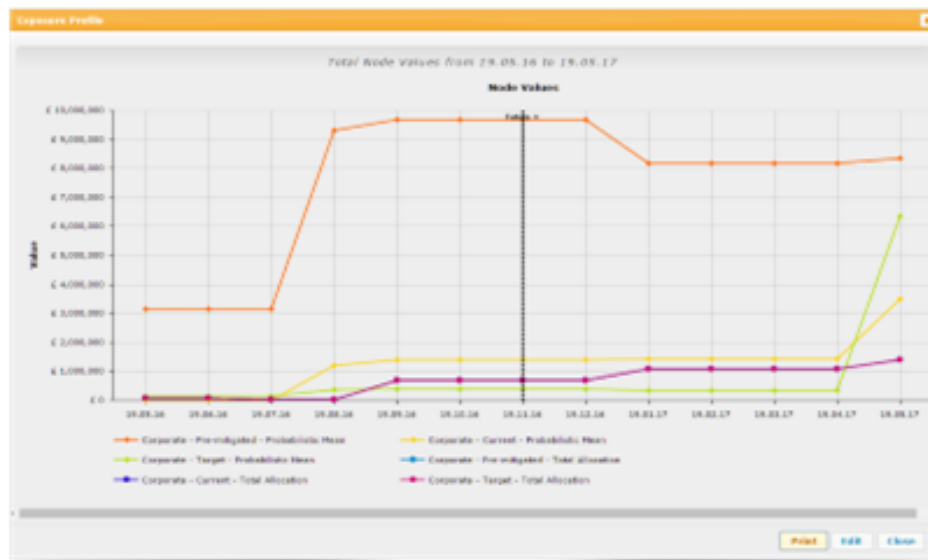
Viewing 1-3 of 3 5

Print Close

# ERM Dashboards and reports

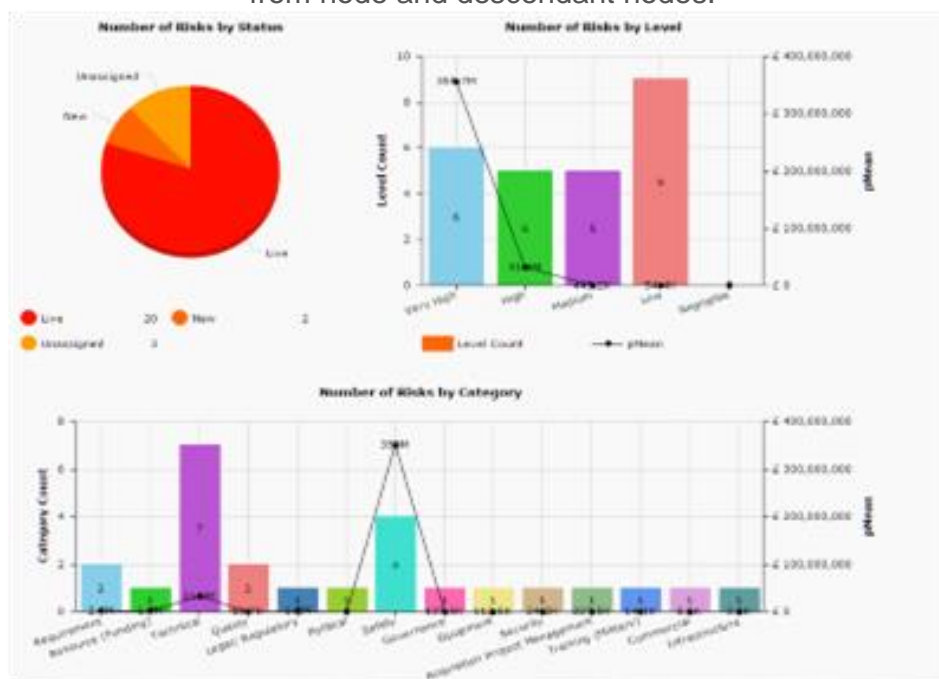
## Risk Exposure Chart

A fully user-configurable chart showing quantitative exposure and mitigation spend for all scenarios and levels within the nodal hierarchy, including node aggregation. Rebuild the chart on the fly with live-edit functionality.



## Risk Summary Dashboard

A graphical view of the profile of risk by status, scoring level and classification with lists of Top 'n' risks by fiscal impact and by closest proximity to being active. Can aggregate from node and descendant nodes.



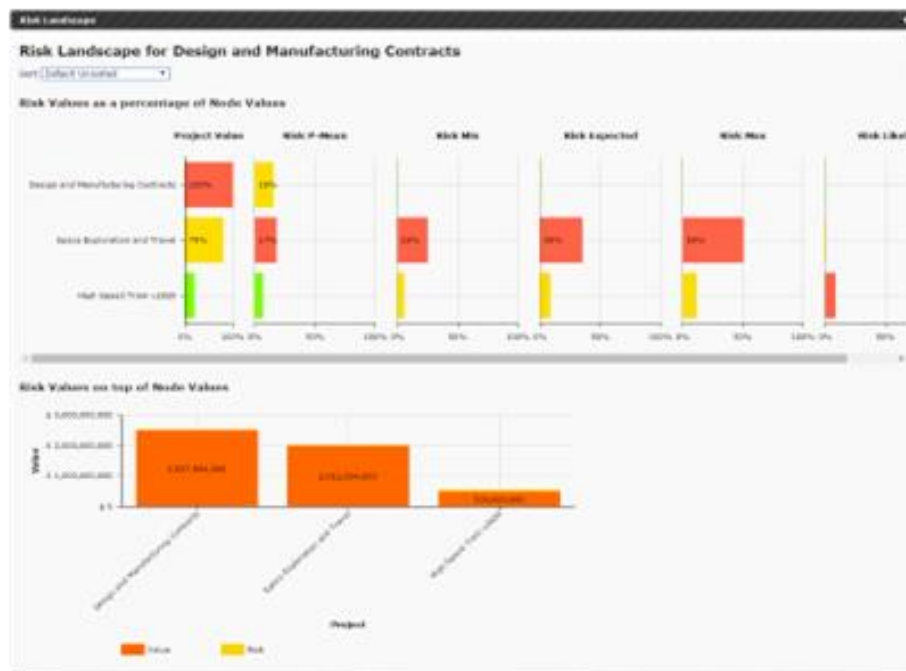
## Risk Radar

Risks and their associated actions are displayed in gantt format on a timeline that includes project or business phases and milestones showing graphically when risks exposure and mitigation planning is active. Clickable to edit risk or action dates or assessment parameters.



## Risk Landscape Chart

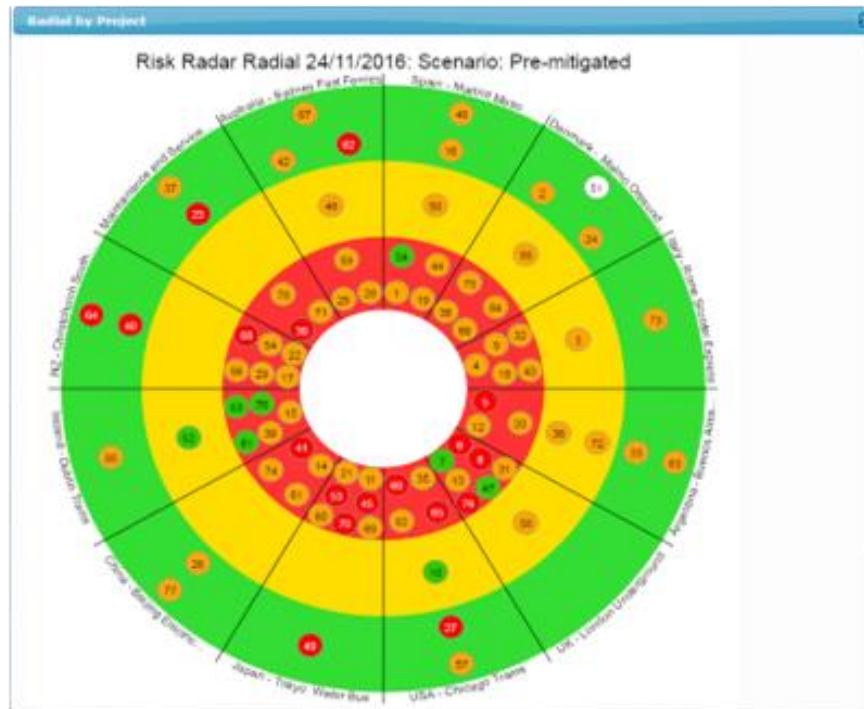
Get a graphical view of your risk landscape that shows you which projects or nodes are risk hot-spots and see how peer-level projects compare with each other. Select from up to six different risk measurement parameters.





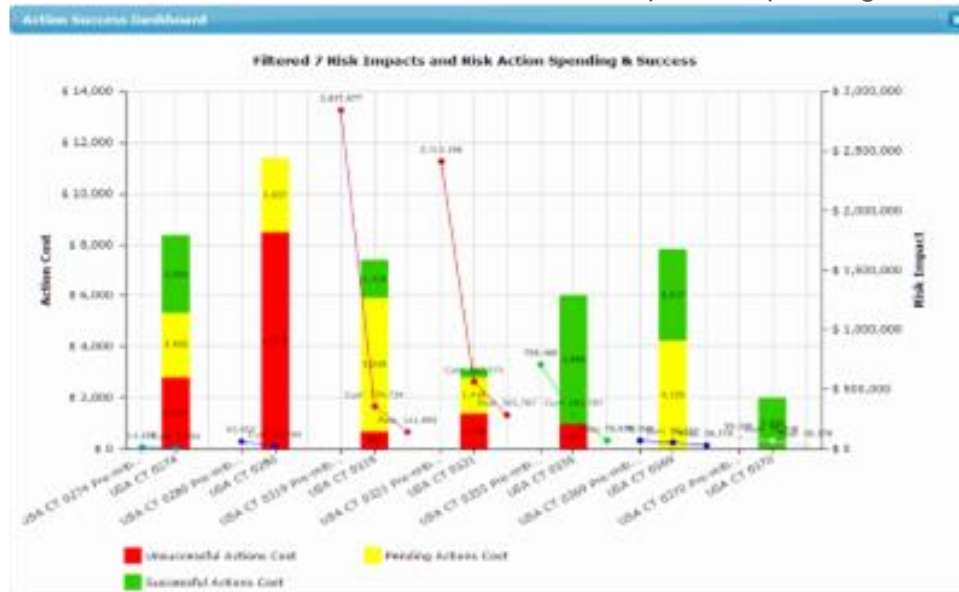
## Risk Radial Chart

Risks or project nodes displayed on a clickable radial 'bullseye' chart helps focus on the significant risks. Configurable using risk parameter selections.



## Action Effectiveness Chart

Displays how much has been spent on actions that have been either successful or unsuccessful and indicates how much is left to spend on pending actions.



## Risk & Assumption Heatmaps

These reports generate familiar PID heatmaps for any scored impact type for any mitigation scenario. Click-through takes you straight to the detail.



## Risk Profile Chart

Understand the nature and distribution of risk types your business is exposed to. This chart provides a summary of risks and a histogram of number of risks in each category plus the quantitative risk exposure for each category.

